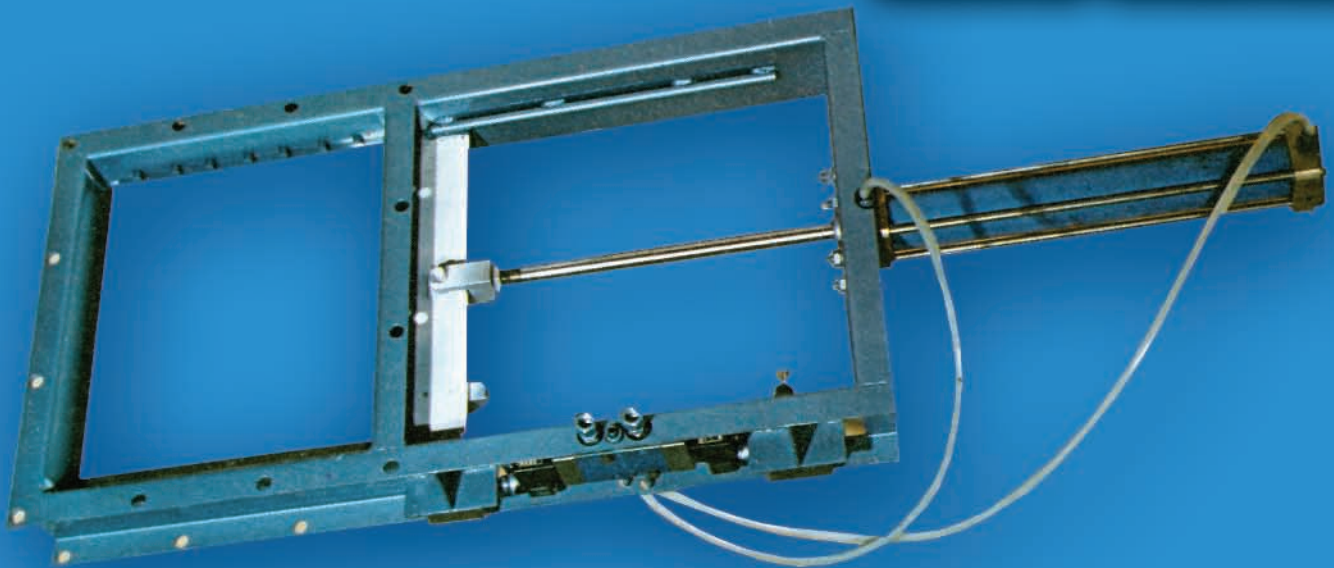


**ZASUNI
S ELEKTROPNEUMATSKIM
UPRAVLJANJEM**

**ELECTRO-PNEUMATICALLY
CONTROLLED
SLIDE VALVES**



Demos d.o.o.

**Tvornica za projektiranje, proizvodnju, montažu i servisiranje,
opreme za zaštitu okoliša**

ZASUNI S ELEKTROPNEUMATSKIM UPRAVLJANJEM

Elektropneumatski elementi protoka imaju ulogu da zatvaraju ili skreću protok medija u transportnim linijama. Upravljanje je daljinsko pomoću pneumatskog cilindra s impulsnim elektromagnetskim razvodnikom. Krajnji položaji zapornika, odnosno skretnih elemenata signaliziraju se pomoću mikroprekidača.

Zasuni za pužne transportere, cijevni zasuni, upotrebljavaju se za sve suhe proizvode kao zaporni elementi ispod silosa, spremnika, kod kojih se materija nalazi pod atmosferskim pritiskom. Suvremena okvirna konstrukcija omogućuje jednostavnu montažu, pouzdan rad, a posebno konstrukcijsko rješenje zapornog elementa omogućuje potpuno brtvljenje, kako u zatvorenom, tako i u otvorenom položaju zasuna.

Zasuni za lančane transportere suvremene su okvirne konstrukcije, a služe kao zaporni elementi za transport svih suhih materijala, naročito prilagođenih VEMOS lančanim transporterima. Ugradnjom zasuna s elektropneumatskim upravljanjem omogućuje se potpuno čišćenje dna korita lančanog transportera, budući da je zasunska ploča u nivou dna korita. Ovim tehničkim usavršavanjem moguće je naizmjenično transportirati različite materijale, te nema opasnosti da dođe do miješanja.

Zasunska ploča vođena je na kotačićima, lako je pomična i sigurnosno brtvljena u položaju otvorenog, a osobito zatvorenog zasuna.

Leptirasti cijevni elektropneumatski zasuni predviđeni su s dva krajnja položaja (otvoreno-zatvoreno). Prikladni su za ugradnju u aspiracijske cjevovode kod punjenja ćelija. Uz ugradnju vremenskih releja naši su zasuni vrlo prikladni za osiguranje od preopterećenja mreže kod pokretanja centrifugalnih ventilatora.

VEMOS elektropneumatski elementi protoka predstavljaju tehnički pouzdan, kvalitetno trajan i usavršen proizvod za široku primjenu.

VEMOS zasune s elektropneumatskim upravljanjem isporučujemo u velikom izboru standardnih tipova, vidljivih iz tehničkih karakteristika, što pruža široko mogućnosti izbora.

ELECTRO-PNEUMATICALLY CONTROLLED SLIDE VALVES

Electro-pneumatic flow control members are designed to shut off or deflect the flow of stock in conveyer lines. They are remotely controlled by a pneumatic cylinder with pulse-type electro magnetic distributor. Extreme positions of both shutting or deflecting members, respectively, are signaled by micro-switches.

Slide valves for worm-drive conveyers and pipe gate valves are used for all dry stock as shut-off members beneath silos and storages tanks in which the stock to be processed is stored under atmospheric pressure. Modern frame design makes for a single installation and a reliable operation while the special design of the shutter enables tight sealing both in open and closed position of the slide valve.

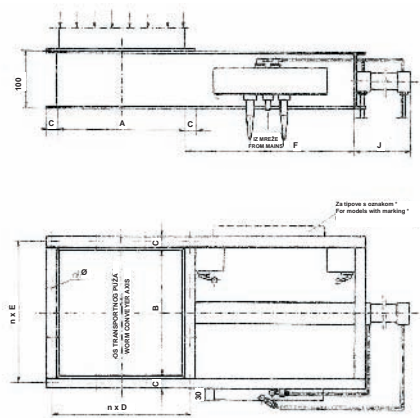
Slide valves for chain-type conveyers are of a modern frame design and are used as shutters for conveyance of dry stock; they are especially adapted to VEMOS chain conveyers. By building in an electro-pneumatically controlled slide valve, the bottom of a chain conveyer can be scrubbed clean because the slide plate is on the trough bottom level. This engineering improvement enables an alternative conveyance of various stock to that there is no hazard of their getting mixed.

Slide plate runs on wheels, moves easily, and is safely sealed with the slide valve in open position and particularly in closed position.

Butterfly pipe electropneumatic slide valves are designed to operate in two extreme positions (open-closed). They are suitable for mounting in aspiration pipe work when filling up storage tank or silo cells. With built-in time relays, our slide valves are very suitable as safeguards against mains overloading when turning on centrifugal blowers.

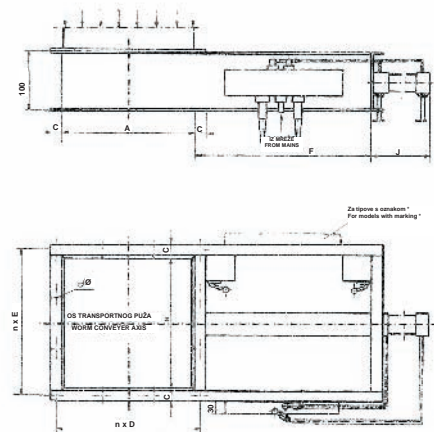
VEMOS electro-pneumatic flow control members are technically reliable, high-quality products of an improved design with long service life.

VEMOS electro-pneumatically controlled slide valves are available in a wide range of standardized models, easily identifiable from technical specifications which enable you to select the model to match your requirements.



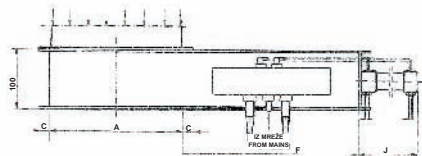
POPREČNI ZASUN ZA JEDNOSTRUKI TRANSPORTNI PUŽ S
ELEKTROPNEUMATSKIM UPRAVLJANJEM PA-15
CROSS SLIDE VALVE, FOR SINGLE WORM CONVEYER WITH
ELECTROPNEUMATIC DRIVE PA-15

Tip Type	A	B	C	D	E	F	J	Ød	n	Potrošnja uzduha [NL] za jedan ciklus Air consumption for 1 cycle
120P1	150	180	27	85	100	287	321	9,5	2	3,855
150P1	180	210	27	100	115	337	321	9,5	2	5,14
180P1	210	250	27	120	140	337	321	12	2	5,14
210P1	240	290	27	135	160	387	371	12	2	6,425
250P1*	280	330	38	110	125	457	442	14	3	8,224
300P1*	330	390	38	125	145	457	442	14	3	8,224
360P1*	390	470	38	145	172	537	522	14	3	10,28

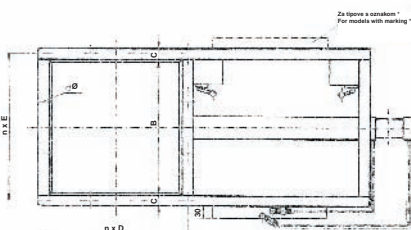


UZDUŽNI ZASUN ZA JEDNOSTRUKI TRANSPORTNI PUŽ S
ELEKTROPNEUMATSKIM UPRAVLJANJEM PA-16
LONGITUDINAL SLIDE VALVE FOR SINGLE WORM CONVEYER WITH
ELECTROPNEUMATIC CONTROL PA-16

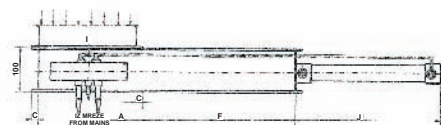
Tip Type	A	B	C	D	E	F	J	Ød	n	Potrošnja uzduha [NL] za jedan ciklus Air consumption for 1 cycle
120U1	180	150	27	100	85	337	321	9,5	2	5,14
150U1	210	180	27	115	100	337	321	9,5	2	5,14
180U1	250	210	27	140	120	387	371	12	2	6,425
210U1	290	240	27	160	135	457	441	12	2	8,224
250U1*	330	280	38	125	110	457	442	14	3	8,224
300U1*	390	330	38	145	125	537	522	14	3	10,28
360U1*	470	390	38	172	145	637	622	14	3	12,85



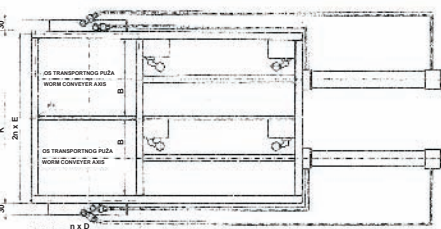
CIJEVNI ZASUN S ELEKTROPNEUMATSKIM UPRAVLJANJEM PA-17
PIPE GATE VALVE WITH ELECTROPNEUMATIC CONTROL PA-17



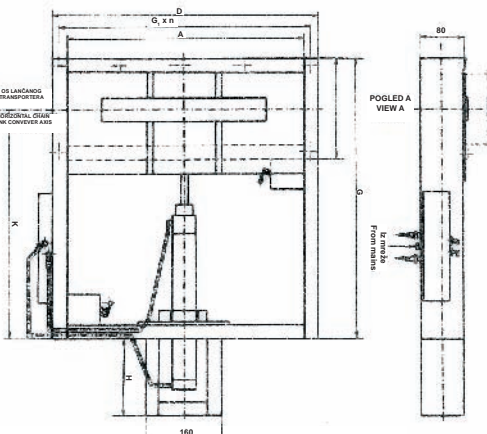
Tip Type	A	B	C	D	E	F	J	Ød	n	Potrošnja uzduha [NL] za jedan ciklus Air consumption for 1 cycle
100	100	100	25	130	130	237	221	9,5	1	2,57
120	120	120	25	150	150	287	271	9,5	1	3,855
150	150	150	25	90	90	287	271	9,5	2	3,855
200	200	200	25	115	115	337	321	12	2	5,14
250*	250	250	35	97	95	387	372	12	3	6,425
300*	300	300	35	113	113	437	442	12	3	8,224



UZDUŽNI ZASUNI ZA DVOSTRUKI TRANSPORTNI PUŽ S
ELEKTROPNEUMATSKIM UPRAVLJANJEM PA-18
LONGITUDINAL SLIDE VALVE FOR DOUBLE WORM CONVEYER WITH
ELECTROPNEUMATIC CONTROL PA-18

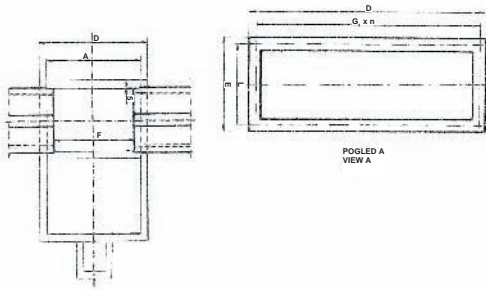


Tip Type	A	B	C	D	E	F	Ød	n	J	K	Potrošnja uzduha [NL] za jedan ciklus Air consumption for 1 cycle
120-U2	180	150	27	102	82	339	9,5	2	319	348	5,14
150-U2	210	180	27	117	97	339	9,5	2	319	408	5,14
180-U2	250	210	27	140	112,5	389	12	2	369	468	6,42
210-U2	290	240	27	160	127,5	459	12	2	439	528	8,22
250-U2*	330	280	38	125	100	460	14	3	439	632	8,22
300-U2*	390	330	38	145	116,5	540	14	3	519	732	10,28
360-U2*	470	390	38	172	136	640	14	3	519	852	12,85



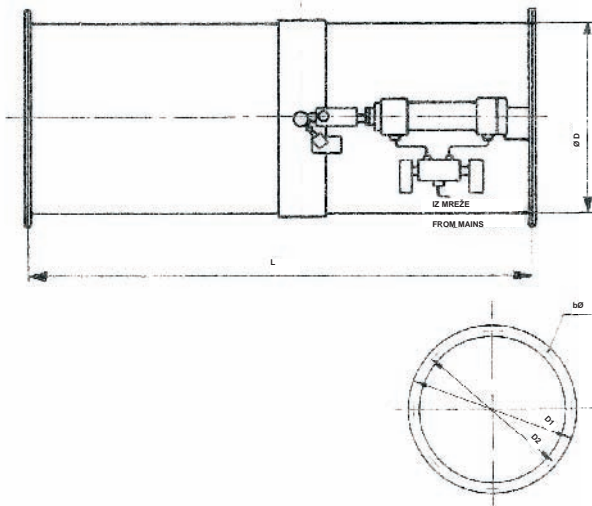
ZA ZRNATE PROIZVODE PA-19
FOR GRANULAR PRODUCTS PA-19

Tip Type	MJERE - DIMENSIONS									
	A	D	E	F	G	G ₁	H	K	L	n
23/10 Z	415	475	164	390	471	148	122	369	137	3
23/12,5 Z	415	475	189	390	534	148	140	419	157	3
30/15 Z	500	560	216	475	590	132,5	160	462	186	4
30/17,5 Z	500	560	241	475	590	132,5	160	449	211	4
38/20 Z	600	660	266	575	665	126	185	512	236	5
38/22,5 Z	600	660	291	575	665	126	185	499	261	5
43/25 Z	700	760	326	675	795	146	205	612	291	5
43/27,5 Z	700	760	351	675	795	146	205	599	316	5
50/30 Z	800	860	390	775	835	138	185	620	345	6
50/32,5 Z	800	860	415	775	970	138	210	742	370	6



ZA BRAŠNASTE PROIZVODE PA-20
FOR MEALY PRODUCTS PA-20

Tip Type	MJERE - DIMENSIONS									
	A	D	E	F	G	G ₁	H	K	L	n
23/10 B	515	575	164	490	471	136	122	369	137	4
23/12,5 B	515	575	189	490	534	136	140	419	157	4
30/15 B	600	660	216	575	590	126	160	462	186	5
30/17,5 B	600	660	241	575	590	126	160	449	211	5
38/20 B	700	760	266	675	665	146	185	512	236	5
38/22,5 B	700	760	291	675	665	146	185	499	261	5
43/25 B	800	860	326	775	795	138	205	612	291	6
43/27,5 B	800	860	351	775	795	138	205	599	316	6
50/30 B	900	960	390	875	835	133	185	620	345	7
50/32,5 B	900	960	415	875	970	133	210	742	370	7



LEPTIRASTI ZASUNI
BUTTERFLY SLIDE VALVE

Tip Type	Mjere - Dimensions					Portošnja uzduha [NL] po ciklusu Air consumption for 1 cycle	Δ P max mm SV
	D	L	D ₁	D ₂	nxd		
535	530	700	605	570	16 x 9,5	2,57	1200
203	200	445	255	232	8 x 9,5	1,285	1200
600	595	750	678	645	16 x 9,5	2,57	1200



Sjedište / Head Office

Vlaška 78/II
10000 Zagreb, Hrvatska-Croatia

Tel.:

+385 1 6524 616
+385 1 6531 291
+385 1 6530 891

Fax.:

+385 1 6531 289
+385 1 6530 861

Proizvodni pogon / Production Plant

49246 Marija Bistrica
Stubička 3, Hrvatska-Croatia

Tel.:

+385 49 382 999

Fax.:

+385 49 382 990

Email:

info@ventilator.hr
uprava@ventilator.hr
www.ventilator.hr

Predstavništvo Srbija / Branch office in Serbia

Ventilator-TVUS d.o.o.
Bulevar oslobođenja 197
11000 Beograd
Tel./Fax: +381 11 3976 997

Predstavništvo Makedonija / Branch office in Macedonia

Ventilator TVUS DOOEL
Georgi Sugare 2/II-24
1000 Skopje
Tel./Fax.: +389 2 2700 260
+389 2 2700 119
+389 2 2780 210

Korporativni partneri / Cooperative partners

ELEX AG, Switzerland
TROGES AG, Austria